

Promoting the Responsible Conduct of Research at Every Level of Research Training at Duke

Geeta K. Swamy, MD, Vice Dean of Scientific Integrity and Associate Vice President for Research

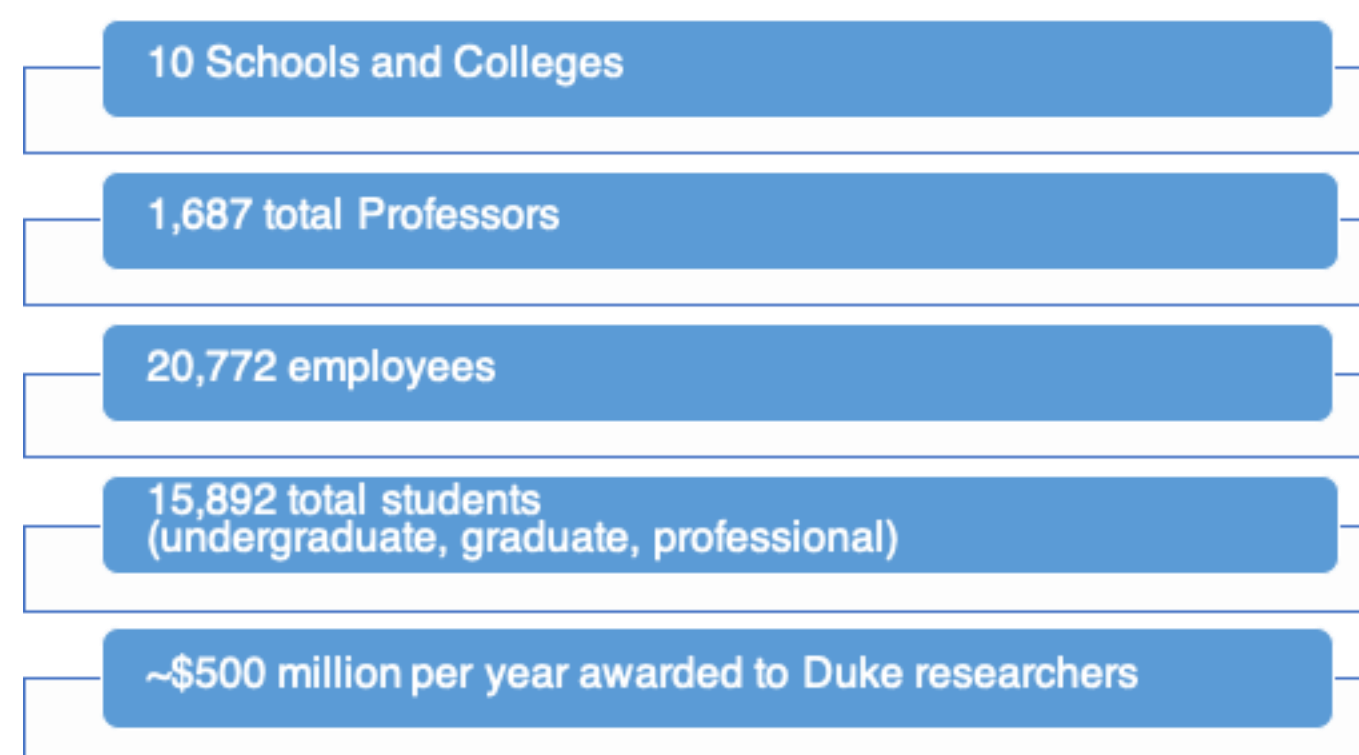
Duke Department of Obstetrics and Gynecology, Duke School of Medicine, and Duke University, Durham, NC, USA

Introduction

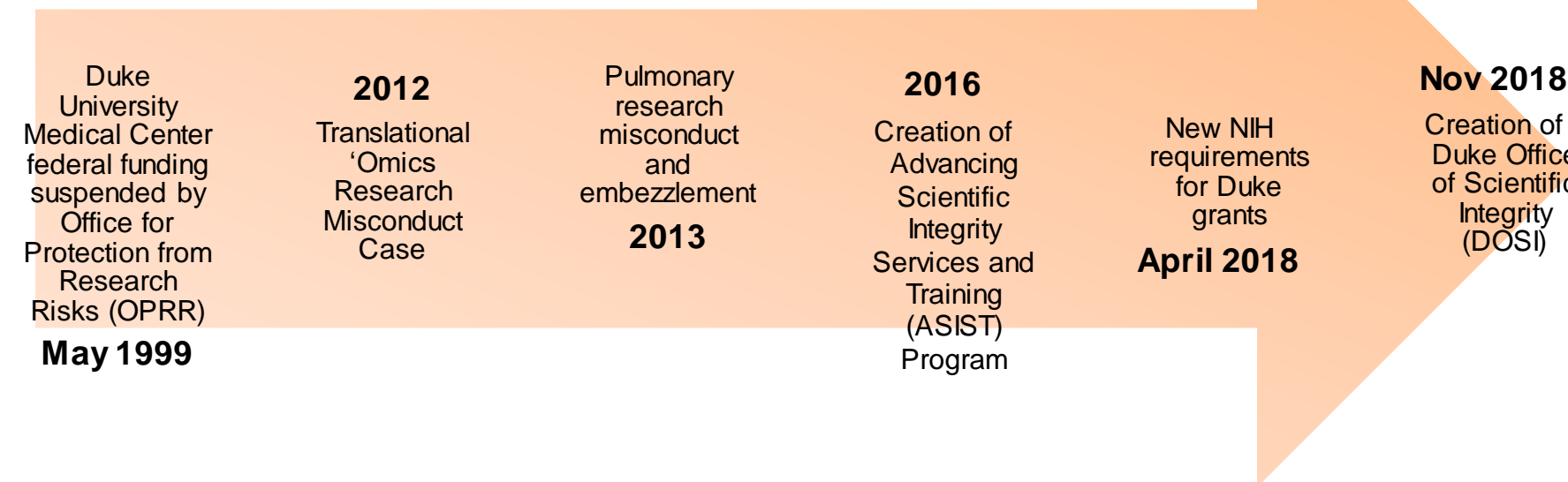
In 2018, Duke University consolidated its research integrity programs into one office, the Duke Office of Scientific Integrity (DOSI). The Responsible Conduct of Research (RCR) program, housed within DOSI, was expanded based on the pilot program implemented in the School of Medicine in 2017 to include faculty and staff researchers across campus. The goals of the program are to develop and support a culture of research integrity by being inclusive, comprehensive, multifaceted, pragmatic and empowering as well as to provide the resources necessary to make it 'easy' to conduct research with integrity.

Duke Environment

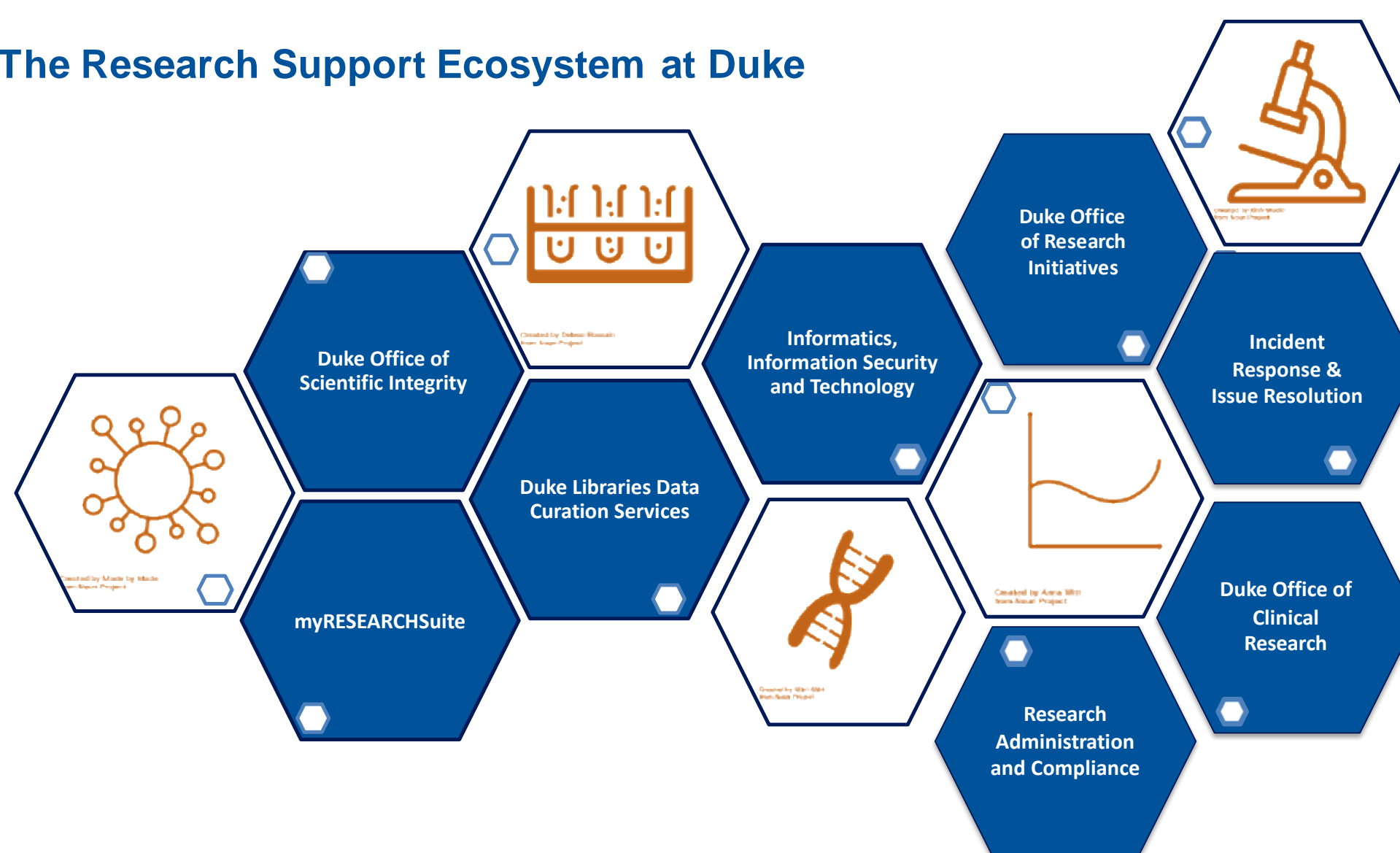
Duke University Facts and Figures



Key Events Leading up to Current Programs



The Research Support Ecosystem at Duke



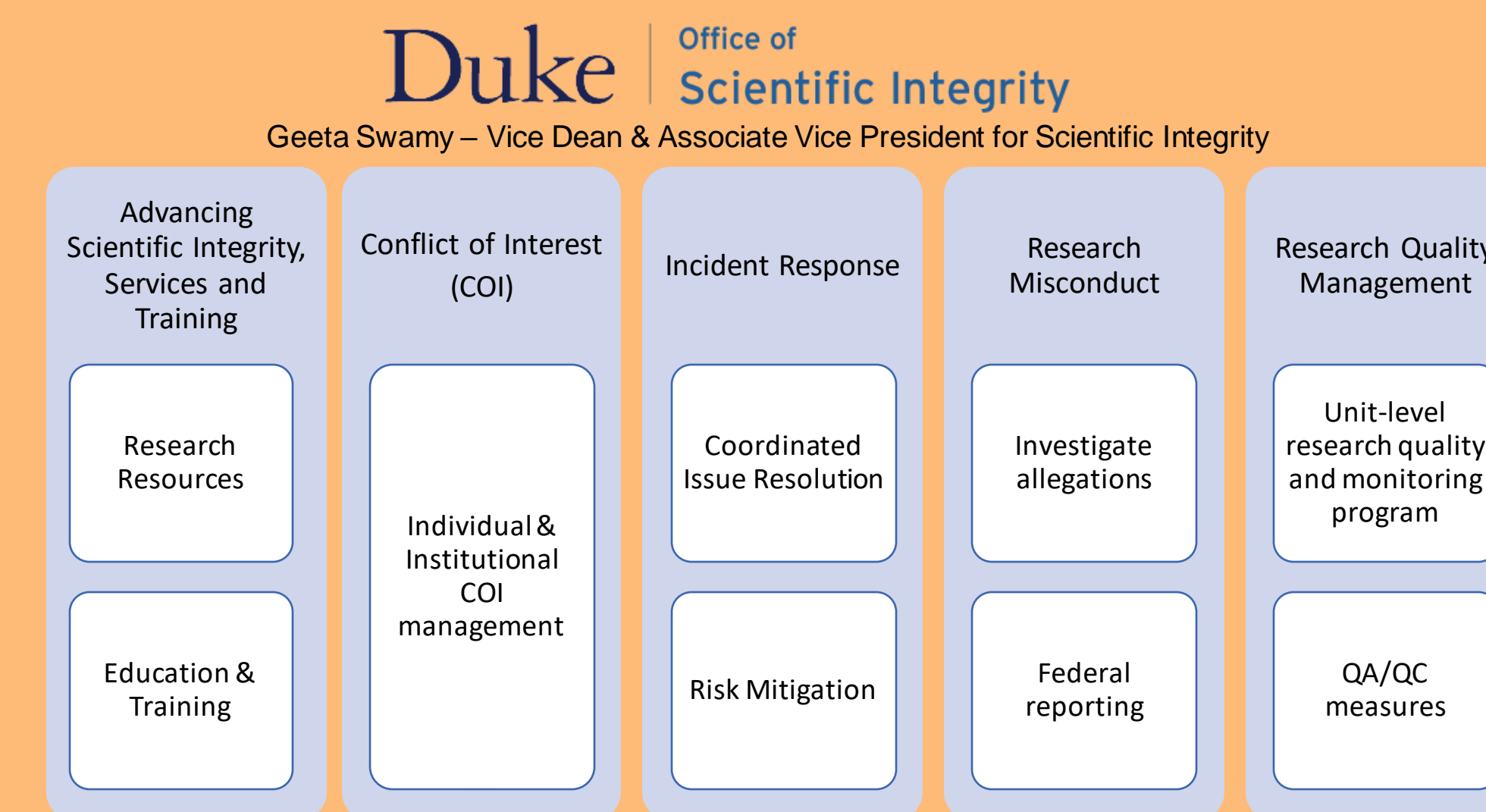
At Duke, the Duke Office of Scientific Integrity works in partnership with other research support offices and services across the research spectrum, including the Duke Office of Research Initiatives, the Duke Office of Clinical Research and the Duke Libraries Data and Curation Services.

Approach to Research Integrity

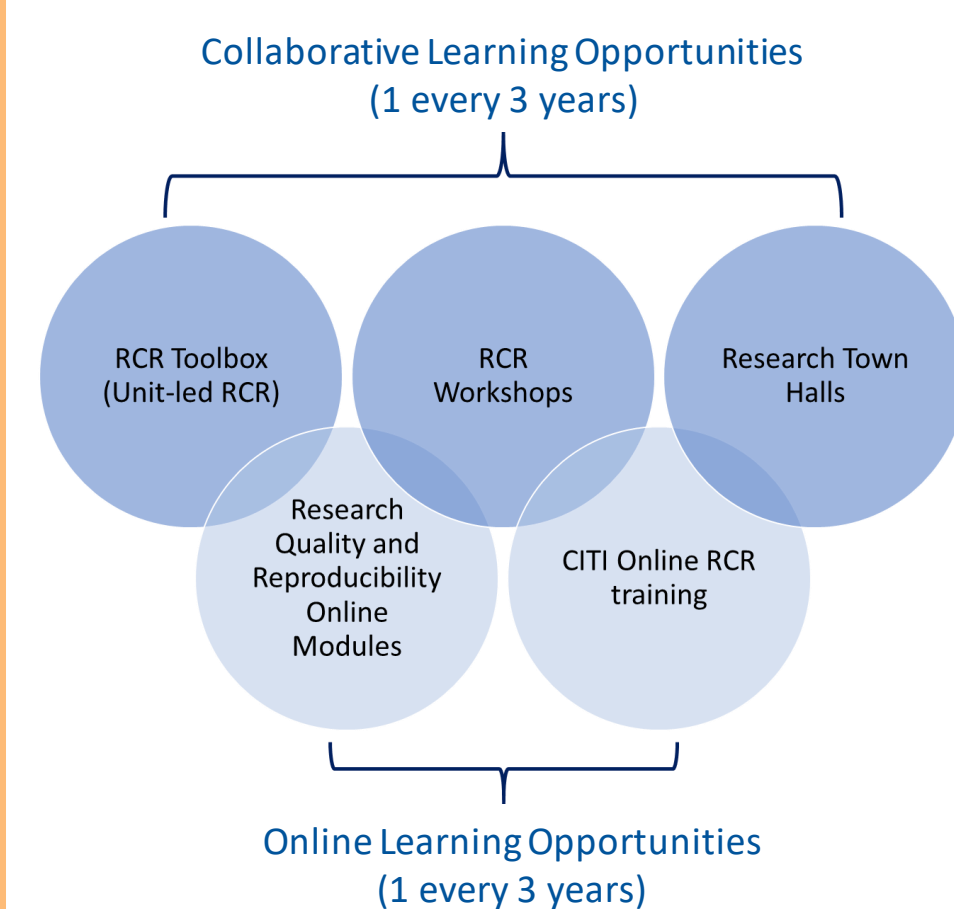
Key Principles of Duke Research Integrity Initiatives

Inclusive	Comprehensive	Multifaceted	Pragmatic	Empowering
<ul style="list-style-type: none"> All research stakeholders need to participate 	<ul style="list-style-type: none"> Education, oversight and accountability 	<ul style="list-style-type: none"> Holistic approach across all dimensions of research integrity 	<ul style="list-style-type: none"> Provide resources and tools to make it facilitate good practices 	<ul style="list-style-type: none"> Facilitate reflection, dialogue and reporting of RCR concerns

Centralized Support for Duke Research Integrity



RCR Program



By the Numbers

DOSI tracks RCR education compliance and at present ~94% of all Duke faculty and staff, and 100% of students and postdocs are in compliance with the RCR training programs.

In 2019, there was ~30% increase in queries to the research misconduct review officer over the previous year, suggesting that individuals are either more aware of the types of behaviors that should be reported or they feel more comfortable reporting them.



Event Topics

- Authorship, ownership and plagiarism
- Conflict of Interest and Entrepreneurship
- International Research Collaborations
- Perverse Incentives
- Data Management Best Practices and Resource
- Mentor-Mentee Relationships
- Science Publishing

What one word describes your experience with authorship assignment?

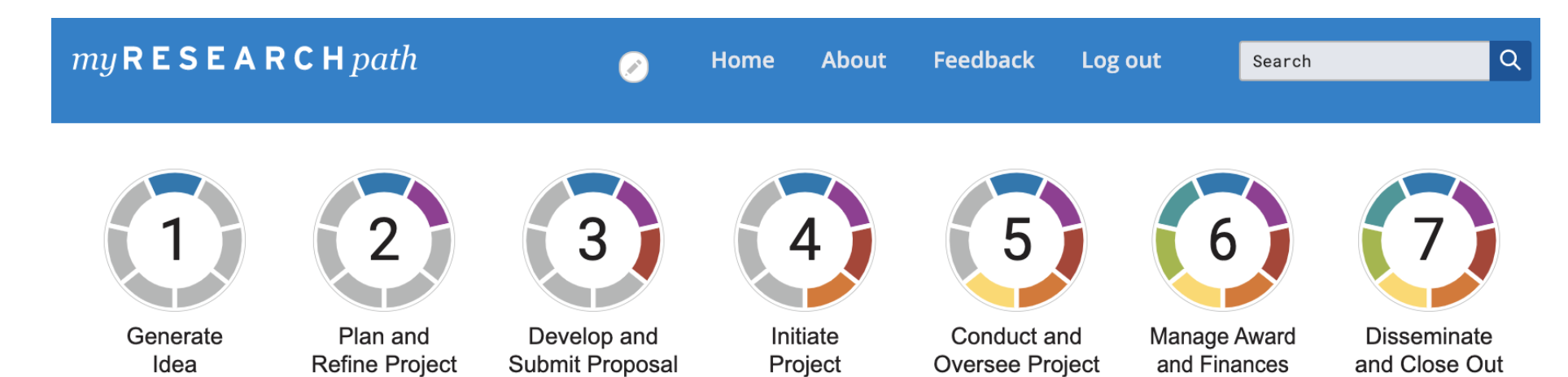


Word cloud created by live audience polling during authorship town hall

Resources

myRESEARCHpath

An interactive research roadmap, which provides resources, including consultations, for quality research in the context of the research lifecycle.



The interactive roadmap for navigating research at Duke University

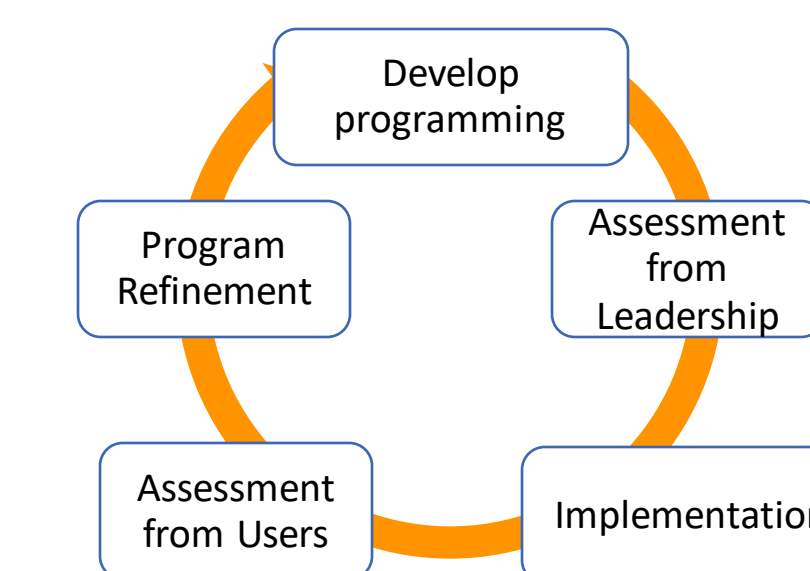
RCR Toolbox

Online source for curated RCR training materials that units may access and use to deliver RCR content at the local level.

Measuring Effectiveness

A number of steps have been implemented and are planned to facilitate ongoing program evaluation and improvement.

Continuous Improvement Cycle



- Survey of Organizational Research Climate (SOURCE) is a validated instrument to assess the climate of research integrity with academic institutions
- Key domains assessed:
 - Responsible Conduct of Research
 - Regulatory Quality
 - Integrity Socialization
 - Integrity Norms
 - Advisor-Advisee Relations
 - Lack of Integrity Inhibitors
 - Departmental Expectations
- Baseline survey completed in 2017 by +/- 1500 SOM researchers
- Plan to redistribute across campus in early 2021 to assess change

Conclusion

At Duke, research integrity programs have been consolidated into a single office, allowing the institution to better achieve its goal of ensuring that research is planned and executed with the highest integrity. A robust, semi-customizable faculty and staff RCR education program has been established. The RCR program is integrated and decentralized in that traditional RCR programming has been expanded into the community via Research Town Halls and local small-group RCR discussions. The integrated approach has helped inculcate the community with the language of research integrity, by providing more opportunities for relevant, meaningful discussions and activities.

Reference

Simon et. al., Implementation of a Responsible Conduct of Research education program at Duke University School of Medicine. *Accountability in Research* (2019).

Acknowledgements

This work is supported by Duke University.